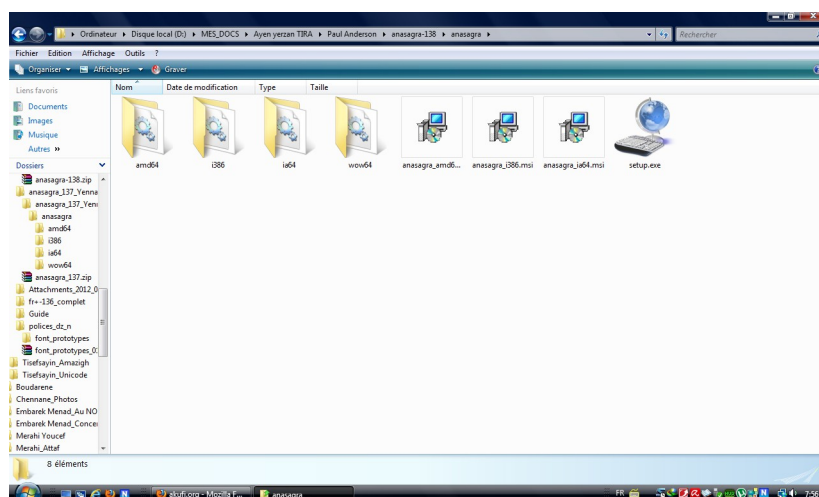


Anuḍaf n unasiw « anasagra »

i tira s tsefsayin Unicode

- Win XP, Win Vista, Win 7, Win 8 -

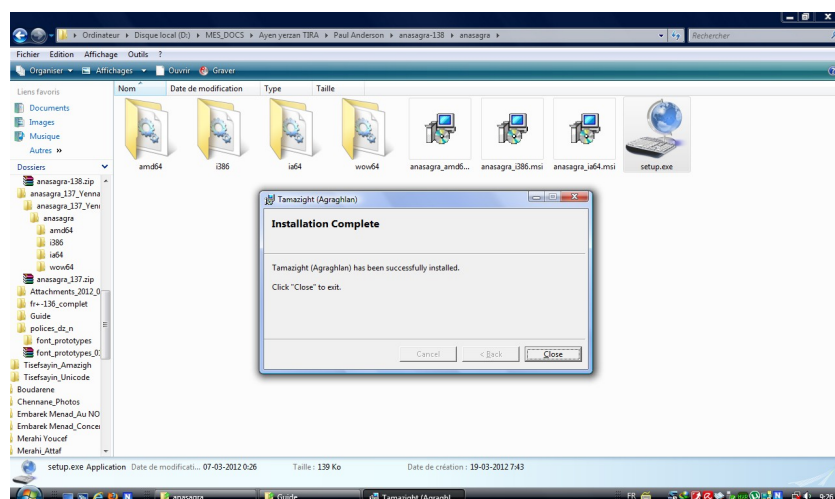
« anasagra » d anuḍaf n unasiw i d-iteddun di yal aselkim iteddun s Microsoft Windows XP, Vista, 7 ney 8 iss nezmer ad naru tamaziyt s tsefsayin Unicode yecban : Arial Unicode MS.



Tafelwit 1

Ifuyla yellan deg unuḍaf n unasiw d widen i d-ibanen deg tfelwit 1. Maca yiwen kan ara nesseqdec : wagi d **setup.exe**.

Ad nsit fell-as snat tikkal, ad nerḡu cwiṭ alamma tban-ay-d tfelwit 2.



Tafelwit 2

Ad nsit yiwet tikkel yef **Close** i wakken ad nekkas tafelwit 2.

Tamawt :

- Tisefsayin iss yezmer ad yeddu unuḍaf n unasiw-a d tiden yesean awal **Unicode** deg yismawen-nsent.
- Imeslayen ideg tella tezditi amedya : axxam-nney, fell-ak... ttyimin akken d yiwen wawal war ma yebḍa yef sin di taggara n tefyirt (**AltGr + v ney taqeffalt tasusamt ^ puis -**).



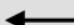





D ayagi kan i yeḥwağ **anasagra** i wakken ad yeddu yef uselkim. Ad d-iban unasiw amecṭuḥ deg wadda ayeffus (ney azelmaḍ) n ugdil, ad yefren usenselkam tutlayt mi ara isit fell-as, ad yefren dayen tasefsit i wakken ad yaru s tmaziyt.

Ma tfernem « **Langue d'entrée par défaut** » d « **Français (France) Tamazight (Agraghlan)** », ad tarum Tamaziyt, Taglizit akked Tefransist s yiwen n unuḍaf n unasiw war ma tbeddlem kra. Tzemrem ad tarum s tsefsayin “- - - **Unicode**” akked d tid ibeddun s “**Amazigh - - -**” yesean isekkilen “**ε**” akked “**Ɛ**” deg-sent, am **Amazigh Bangle**, **Amazigh Garamond...** akked **Amazigh Footlight MT Light**.

- Panneau de Configuration
- Options Régionales et linguistiques
- Langues
- Détails
- Langue d'entrée par défaut

2	1 &	2 é ~	3 " #	4 ' {	5 ([6 - -	7 è `	8 _ \	9 ç ^	0 à @ °)	+ = }	← Backspace	
Tab ⇐ ⇨	A	Zz	E €	Rr	Tt	Y	U	I	O	P	£ \$	↵ Enter		
Caps Lock ⬆	QY	SŞ	DĐ	F	GĞ	Hh	J	K	L	M	% ù	µ *		
Shift ⬆	> <	Wε	X	CČ	V -	B	N	? ,	: ;	/ :	§ !	Shift ⬆		
Ctrl	Win Key	Alt								Alt Gr	Win Key	Menu	Ctrl	

Tarusi n yisekkilen yef unasiw : **Zz , Rr , Tt , Yy , Şş , Đđ , Ğğ , Ĥĥ , Ɛε , Čč** .
(Taqeffalt tasusamt ^ sakin d asekkil)

 	1 &	2 é ~	3 " #	4 ' {	5 ([6 -	7 è `	8 _ \	9 ç ^	0 à @	°)	+ = }	 Backspace
Tab 	A	Z z	E €	R r	T t	Y	U	I	O	P	£ \$	 Enter	
Caps Lock 	Q q	S s	D d	F f	G g	H h	J j	K k	L l	M	% ù	µ *	
Shift 	> <	W w	X x	C c	V v	B b	N n	? ,	: ;	/ <	§ !	Shift 	
Ctrl	Win Key	Alt	nbsp nbsp						Alt Gr	Win Key	Menu	Ctrl	

Tarusi n yisekkilen imezyanen yef unasiw : **z, r, t, y, ş, đ, ğ, ĥ, ε, č**. (**AltGr**+asekkil)

Lexique contextuel

Anudaf : pilote, driver

Anasiw : clavier

« Anasagra » : nom du pilote

Tasefsayt : police de caractère, font

Aselkim : ordinateur

Tafelwit : tableau

Afaylu : fichier

Tizdit : tiret

Taqeffalt tasusamt : touche morte

Agdil : écran

Asenselkam : informaticien, utilisateur de l'ordinateur

Asekkil : lettre

Asekkil ameqqran : majuscule

Asekkil amezyan : miniscule